

1. Safety Basics Quiz

What types of incidents must be reported to supervision or a member of management immediately? *(Select all that apply)*

- Unsafe Conditions
- Near Miss
- Vehicle or Property Damage
- Customer Injury

Can you spot the hazard? Mark the area on the photo which would be considered a safety hazard →

Only management is responsible for maintaining a safe work environment.

- True
- False

Can you spot the hazard? Mark the area on the photo that is a safety hazard. ↙



How often should you inspect your work area for unsafe conditions and behaviors?

- All the time
- Weekly
- Monthly
- Only when instructed by management

2. Safety Fundamentals – Ergonomics with Back Safety

Marjorie in the video has been typing several documents throughout the day and is now experiencing some neck pain. What could you suggest she do to help ease her neck issue?

(Select all that apply)

- Adjust her chair
- Attach a monitor to laptop and adjust to proper height
- Call the Benefits Department
- Improve her posture

Circle the correct technique when lifting boxes or other items



It is easier on your body if you pull and not push a load.

- True
- False

Which of the following can help prevent a back injury?

- Stretching
- Medication
- Sleeping 8 hours
- Exercising

Draw a line from the Signs and Symptoms of Ergonomic Issues (bulleted list items) to the correct identifying title in box to the right-hand side.

• **Example List Item Only**

- Stiffness
- Fatigue
- Toes turning white
- Burning sensation
- Vomiting

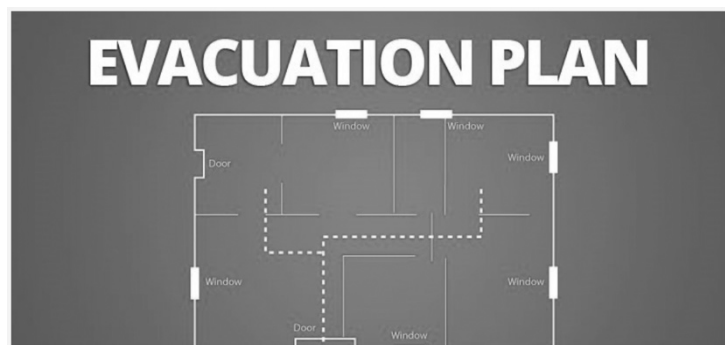
Sign or Symptom

Not a Sign or Symptom

3. Safety Fundamentals – Emergency Action Plans

Mark the three important actions you must know when responding to emergencies at work.

- Know how to get there
- Is the supervisor available
- Know where to go
- Know what to do
- The nearest fire extinguisher



What are some things you can do to prepare for the weather you work in? (Select all that apply)

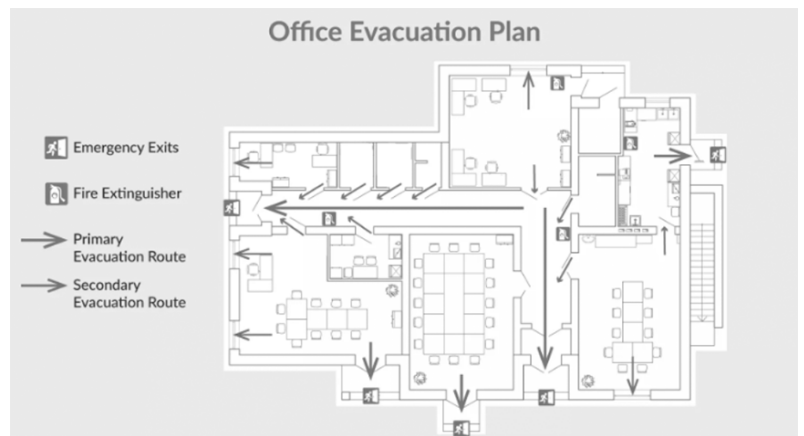
- Wait until bad weather passes over
- Wear sunscreen
- Dress in layers if you work outside in the cold
- Get weather alerts from a weather app
- Call in sick

Employees are required to give first aid, CPR, or use the AED.

- True
- False

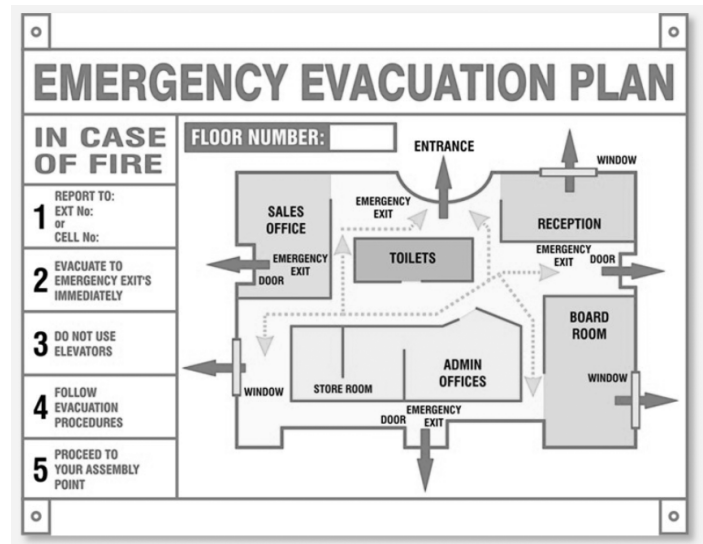
Where should building evacuation routes be posted? (Select all that apply)

- Breakroom
- Near elevators
- Near paint department
- Common meeting points
- Supervisor's or manager's office



How often should you participate in drills at your location?

- A week before OSHA visit
- Monthly
- Annually
- As needed



4. Safety Fundamentals – Slips, Trips and Falls

What are some common causes of slips, trips and falls?

(Select all that apply)

- Spills
- Ice
- Hot water
- Gasoline
- Loose rugs

Employees are required to inspect ladders **only after** using it.

- True
- False

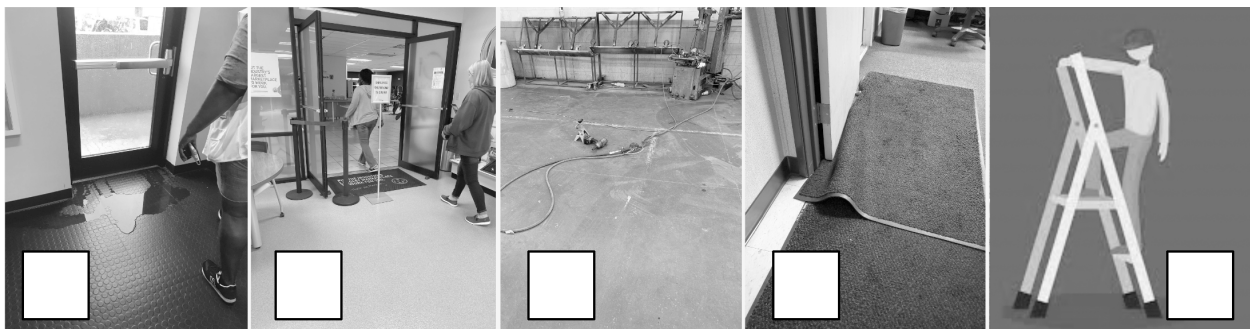
What are three things you should do when you see a hazard?

- Make a note to report it at the end of the month
- Speak up
- Ignore it
- Take corrective action
- Submit a near miss

What is one of the most **common** workplace injuries?

- Golf cart to vehicle accidents
- Chemical burns
- Smoke inhalation
- Slip and fall accidents

Can you spot the picture “without” the hazard? Check the box in the picture the would prevent a fall.



5. Safety Fundamentals – Seasonal Weather Safety

James has been working outside in 90° weather and is starting to feel a little dizzy. What could you suggest he do to prevent heat stress? *(Select all that apply)*

- Find a cool place to sit down
- Keep working, dizzy spell will eventually go away
- Provide him with water
- Give him a cup of coffee
- Loose rugs

Overnight, there was a snow/ice storm. Snow and ice accumulated in front of the doors. What should be done to address the buildup? *(Select all that apply)*

- Place ice melting products on ice
- Shovel the snow away
- Pour hot water on ice
- Use a scrubber/sweeper to remove snow

To prevent heat stress, you could dress in layers.

- True
- False

When working in winter weather, you should do this when getting in or out of vehicles.

- Remote start the vehicle
- Turn on emergency lights
- Yell out to others
- 3 points of contact

Draw a line from the bulleted list items to the correct category on the right.

• **Example List Item Only**

- Take breaks in the shade
- Take breaks in warm area
- Drink cool water
- Dress in layers

Cold Stress

Heat Stress

6. Safety Fundamentals – Personal Protective Equipment (PPE)

Your responsibilities as it relates to PPE include: *(Select all that apply)*

- Wearing require PPE items at all times
- Contacting OSHA to order new PPE supplies
- Always bring your own personal PPE to work
- Reporting low supplies of PPE
- Properly cleaning PPE

What types of body protection is required when handling batteries?

(Select all that apply)

- Face shield
- Ear muffs
- Respirator
- Acid resistant apron
- Chemical resistant gloves

You are required to wear hearing protection anytime you're in the operation.

- True
- False

All team members who perform spray painting or coatings operations must wear approved _____.

- Chemical resistant gloves
- High visibility vests
- Respirator
- Face shields

Draw a line from the bulleted list items on both left and right sides to the correct category in the middle.

• **Example List Item Only**

- Eye Glasses
- Ear Plugs
- Coveralls
- Face Shields

Considered PPE

Not Considered PPE

- Baseball Cap
- Open Toed Shoes
- Hi Visibility Vests
- Uniform

7. Safety Fundamentals – Hazard Communication (HAZCOM)

While working with hazard chemicals, you must be familiar with which of the following?

(Select all that apply)

- Protective measures to take
- How to handle and store the products
- What to do in case of an emergency
- Hazards associated with the chemicals
- Chemical you are using

Placing a label on a secondary container is optional; as long as you know its content, you should be ok.

- True
- False

Wearing the required PPE and knowing the correct spill procedures is a good practice to follow when working with hazard chemicals.

- True
- False

What system requires a 16-section standardized format on an SDS?

- Computer Information System
- Management Information System
- Globally Harmonized System
- Label Printing System

Draw a line from the bulleted list items located on left and right sides to the correct category in the middle (If applicable).

• **Example List Item Only**

- Barcode
- Product ID
- Facility Name
- Signal Word
- Hazard Statements

Required Information
On a Label/SDS

- QR Code
- Manufacturer Information
- Precautionary Statements
- Pictograms
- General Uses

8. Safety Fundamentals – Workplace Violence

The main types of workplace violence include: *(Select all that apply)*

- Animal Cruelty
- Worker on Worker
- Criminal Intent
- Customer to Worker
- Domestic Violence

Threatening a fellow co-worker with bodily harm is permitted, provided you have a good enough reason to do so.

- True
- False

Take action if you are concerned about a person who shows all or some of the warning signs of escalation.

- True
- False

What is the name of the policy the Company has put in place with respect to workplace violence that protects our team members, vendors and clients?

- Zero Tolerance
- Anti-Workplace Violence
- Safe Environment
- Stop Workplace Violence

Draw a line from the bulleted list items located on left and right sides to the correct category in the middle (*If applicable*).

• **Example List Item Only**

- Drug Overdose
- Changes in Work Schedule
- Difference of Opinion
- Arson
- Physical Assaults

Required Information
On a Label/SDS

- Property Damage
- Theft
- Pranks
- Enforcement of Dress Code
- Harassment

9. Safety Fundamentals – Driver & Lot Safety

Never drive under the influence of intoxicants that could impair your ability to drive.

These intoxicants include: (*Select all that apply*)

- Eye drops
- Drugs
- Prescription medication that may cause drowsiness
- Alcohol
- Sodas

When driving minimum speeds, how much distance should you maintain between vehicles on auction lots?

- Up to you
- 2-3 feet
- 10-20 feet
- 4-6 feet

Never have which of the following in a company or client vehicle or while driving for work. (*Select all that apply*)

- Pet
- Firearms
- Cigarettes
- Marijuana
- Radar detectors

Which of the following are some defensive techniques you should follow while driving? (*Select all that apply*)

- Stay focused on driving and the road
- Use your signal when changing lanes
- Always be prepared
- Keep safe distance from other vehicles
- Keep an eye on surroundings

Be extra careful driving in severe weather conditions.

- True
- False

10. **Safety Fundamentals – Lane and Sale Day Safety**

People walking or driving while looking at or talking on their phone can result in:

(Select all that apply)

- Illness
- Being banned from auction
- Injuries
- Near misses
- Collisions

How much distance should you maintain between vehicles?

- Up to you
- 2-3 feet
- 10-20 feet
- 4-6 feet

What is the primary source of distraction?

- Lack of focus
- Eating or Drinking
- Listening to radio
- Electronic Devices

Why is it important to wear high visibility clothing on auction lots?

(Select all that apply)

- Looks good
- Clients can find you in case of emergency
- Helps you stay focused
- Ensures drivers see you

Always follow the designated walkways or paths that are outlined for pedestrians.

- True
- False